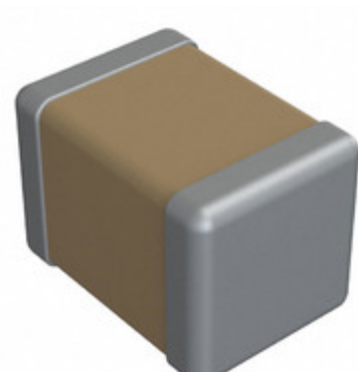


1812Y0250100FFR



Images are for reference only.
See Product Specifications for product details.
Buy 1812Y0250100FFR with confidence from
Component-World.HK, 1 Year Warranty



Part Number: 1812Y0250100FFR
Manufacturer: Knowles Syfer
Description: CAP CER 10PF 25V C0G/NP0 1812
Data sheet: [MLCC High Reliability Datasheet](#)

RoHS Status: Lead free / RoHS Compliant
Ship From: Hong Kong
Shipment Way: DHL/Fedex/TNT/UPS/EMS

[Request For Quotation](#)

PRODUCT PARAMETER

Part Number	1812Y0250100FFR	Manufacturer	Knowles Syfer
Description	CAP CER 10PF 25V C0G/NP0 1812	Lead Free Status / RoHS Status	Lead free / RoHS Compliant
Quantity Available	21304 pcs	Data sheet	MLCC High Reliability Datasheet
Category	Capacitors	Voltage - Rated	25V
Tolerance	±1%	Thickness (Max)	0.098" (2.50mm)
Temperature Coefficient	C0G, NP0	Size / Dimension	0.177" L x 0.126" W (4.50mm x 3.20mm)
Series	FlexiCap™	Ratings	-
Packaging	Tape & Reel (TR)	Package / Case	1812 (4532 Metric)
Operating Temperature	-55°C ~ 125°C	Mounting Type	Surface Mount, MLCC
Moisture Sensitivity Level (MSL)	1 (Unlimited)	Manufacturer Standard Lead Time	8 Weeks
Lead Style	-	Lead Spacing	-
Lead Free Status / RoHS Status	Lead free / RoHS Compliant	Height - Seated (Max)	-
Features	Soft Termination	Failure Rate	-
Detailed Description	10pF ±1% 25V Ceramic Capacitor C0G, NP0 1812 (4532 Metric)	Capacitance	10pF
Applications	Boardflex Sensitive		

Component-World.com is a Reliable Stocking Distributor of Electronic Components. We specialize in all Knowles Syfer series electronic components. We have 21304 pieces of Knowles Syfer 1812Y0250100FFR in stock available now. Request a quote from electronics components distributor at Component-World.com, our sales team will contact you within 24 hours.
RFQ Email: info@Components-World.com

RELATED PRODUCTS

	Part#: 1812Y0250100JCR Description: CAP CER 10PF 25V C0G/NP0 1812	Manufacturers: Knowles Syfer	RFQ
	Part#: 1812Y0160824MDR Description: CAP CER 0.82UF 16V X7R 1812	Manufacturers: Knowles Syfer	RFQ
	Part#: 1812Y0160824MXR Description: CAP CER 0.82UF 16V X7R 1812	Manufacturers: Knowles Syfer	RFQ
	Part#: 1812Y0250100FCT Description: CAP CER 10PF 25V C0G/NP0 1812	Manufacturers: Knowles Syfer	RFQ
	Part#: 1812Y0250100GFR Description: CAP CER 10PF 25V C0G/NP0 1812	Manufacturers: Knowles Syfer	RFQ
	Part#: 1812Y0160824KDR Description: CAP CER 0.82UF 16V X7R 1812	Manufacturers: Knowles Syfer	RFQ
	Part#: 1812Y0160824MXT Description: CAP CER 0.82UF 16V X7R 1812	Manufacturers: Knowles Syfer	RFQ
	Part#: 1812Y0250100FFT Description: CAP CER 10PF 25V C0G/NP0 1812	Manufacturers: Knowles Syfer	RFQ
	Part#: 1812Y0250100JCT Description: CAP CER 10PF 25V C0G/NP0 1812	Manufacturers: Knowles Syfer	RFQ
	Part#: 1812Y0250100FCR Description: CAP CER 10PF 25V C0G/NP0 1812	Manufacturers: Knowles Syfer	RFQ
	Part#: 1812Y0250100GCR Description: CAP CER 10PF 25V C0G/NP0 1812	Manufacturers: Knowles Syfer	RFQ
	Part#: 1812Y0160824KXT Description: CAP CER 0.82UF 16V X7R 1812	Manufacturers: Knowles Syfer	RFQ
	Part#: 1812Y0250100GFT Description: CAP CER 10PF 25V C0G/NP0 1812	Manufacturers: Knowles Syfer	RFQ
	Part#: 1812Y0160824MDT Description: CAP CER 0.82UF 16V X7R 1812	Manufacturers: Knowles Syfer	RFQ
	Part#: 1812Y0250100KCR Description: CAP CER 1812	Manufacturers: Knowles Syfer	RFQ
	Part#: 1812Y0250100JFR Description: CAP CER 10PF 25V C0G/NP0 1812	Manufacturers: Knowles Syfer	RFQ
	Part#: 1812Y0250100GCT Description: CAP CER 10PF 25V C0G/NP0 1812	Manufacturers: Knowles Syfer	RFQ
	Part#: 1812Y0160824KXR Description: CAP CER 0.82UF 16V X7R 1812	Manufacturers: Knowles Syfer	RFQ
	Part#: 1812Y0160824KDT Description: CAP CER 0.82UF 16V X7R 1812	Manufacturers: Knowles Syfer	RFQ
	Part#: 1812Y0250100JFT Description: CAP CER 10PF 25V C0G/NP0 1812	Manufacturers: Knowles Syfer	RFQ

Related keywords for 1812Y0250100FFR

Knowles Syfer 1812Y0250100FFR	1812Y0250100FFR distributor	1812Y0250100FFR supplier	1812Y0250100FFR price
1812Y0250100FFR download datasheet	1812Y0250100FFR datasheet	1812Y0250100FFR stock	buy 1812Y0250100FFR
Knowles Syfer 1812Y0250100FFR	Syfer 1812Y0250100FFR		